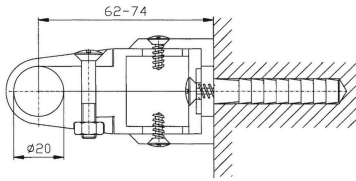
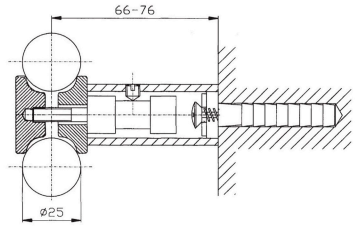


Heating element type KD

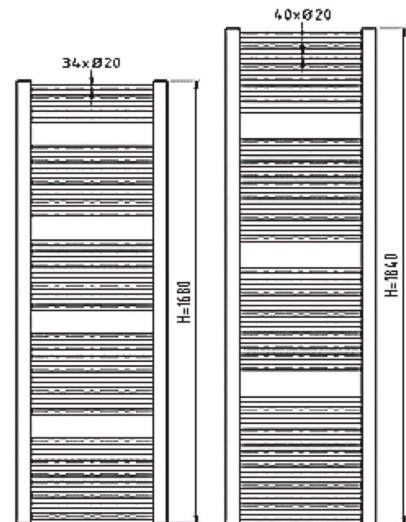
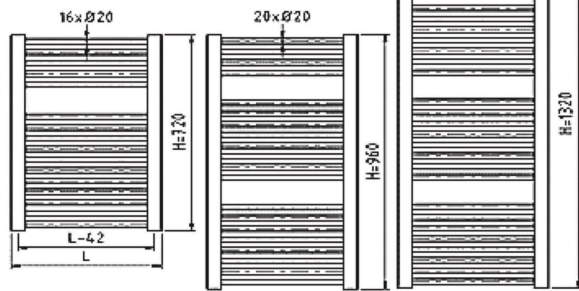
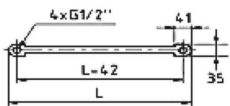
Used material: vertical D profile - 35x41 mm
horizontal profile - straight tube, diameter 20mm



plastic holder



metal holder
for extra payment



Heater power Q[W] for heat-transfer substance water according to DIN EN 442

Type description	Height H [mm]	Length L [mm]	Thread pitch [mm]	t ₁ /t ₂ [°C]	Q[W] pro t ₁ [°C]			Thermal exponent n [-]	Water volume n [l]	Rec. Radiator input power [W]
					20	22	24			
KD 450 / 720	720	450	408	90/70	450	432	414	1,2347	3,6	200
				75/65	360	342	324			
				55/45	191	176	160			
KD 600 / 720	720	600	558	90/70	604	579	554	1,2507	4,35	300
				75/65	481	457	433			
				55/45	254	233	212			
KD 750 / 720	720	750	708	90/70	759	727	695	1,2666	5,1	300
				75/65	602	572	542			
				55/45	315	289	263			
KD 450 / 960	960	450	408	90/70	562	538	515	1,2564	4,53	300
				75/65	447	424	402			
				55/45	235	216	196			
KD 600 / 960	960	600	558	90/70	752	720	689	1,2607	5,51	300
				75/65	597	567	538			
				55/45	314	288	262			
KD 750 / 960	960	750	708	90/70	943	903	864	1,2651	6,49	400
				75/65	749	711	674			
				55/45	392	359	327			
KD 450 / 1320	1320	450	408	90/70	752	720	688	1,2908	6	400
				75/65	594	564	534			
				55/45	307	281	255			
KD 600 / 1320	1320	600	558	90/70	1003	960	918	1,2767	7,35	500
				75/65	795	754	714			
				55/45	414	379	345			
KD 750 / 1320	1320	750	708	90/70	1253	1201	1149	1,2626	8,7	600
				75/65	996	946	896			
				55/45	522	479	436			
KD 450 / 1680	1680	450	408	90/70	956	915	875	1,2781	7,6	500
				75/65	757	719	681			
				55/45	394	361	328			
KD 600 / 1680	1680	600	558	90/70	1277	1223	1170	1,273	9,3	600
				75/65	1013	961	911			
				55/45	528	484	440			
KD 750 / 1680	1680	750	708	90/70	1599	1531	1465	1,2678	11	700
				75/65	1269	1205	1141			
				55/45	664	608	554			
KD 450 / 1840	1840	450	408	90/70	1090	1042	996	1,3063	8,7	500
				75/65	859	814	770			
				55/45	441	403	365			
KD 600 / 1840	1840	600	558	90/70	1452	1390	1329	1,2853	10,7	700
				75/65	1148	1090	1032			
				55/45	596	545	496			
KD 750 / 1840	1840	750	708	90/70	1812	1736	1661	1,2643	12,7	900
				75/65	1439	1367	1295			
				55/45	754	691	630			

The heating performance data applies to one-side connection of top-down